

Adding images to the Photo Gallery

To add an image to the Photo Gallery either click 'Submit' on the Photo Gallery menu or click 'add photo' in Photo Gallery.

The **Photo Upload** window will open....

At the top of the **Photo Upload** window the maximum image size for uploading is shown, in this case it's 1024x1024 pixels. You can set this in your photo editing software.

The maximum file size for uploading is 250kb (shown here as 250000). Again if your file size is to big you can use your photo editing software to reduce this (usually by increasing the compression when you save the file).

Type you title and description, in this example the title is 'My New Fish' and the description is 'A Picture of my new fish'

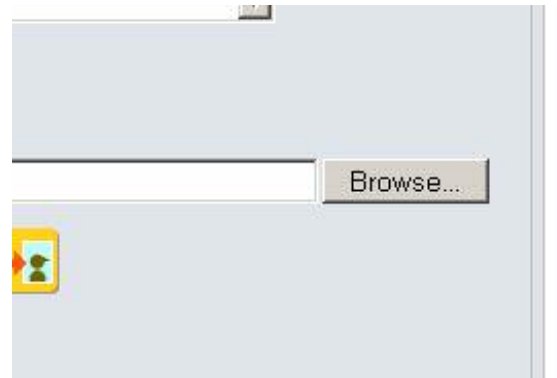
Photo Upload

Max pixel size	1024 x 1024 (auto resize)
Max file size	250000
Title	<input style="width: 90%;" type="text" value="My New Fish"/>
Description	<div style="border: 1px solid #ccc; padding: 5px;"> <div style="display: flex; justify-content: space-between; align-items: center;"> </div> <div style="display: flex; justify-content: space-between; align-items: center; margin-top: 5px;"> SIZE <input style="width: 30px;" type="text"/> FONT <input style="width: 30px;" type="text"/> COLOR <input style="width: 30px;" type="text"/> </div> <div style="display: flex; justify-content: space-between; align-items: center; margin-top: 5px;"> B <i>I</i> <u>U</u> <input style="width: 50px;" type="text"/> Add </div> <div style="border: 1px solid #ccc; padding: 5px; min-height: 100px; margin-top: 5px;"> A picture of my new fish </div> <div style="display: flex; justify-content: space-between; align-items: center; margin-top: 5px;"> [more...] </div> </div>
Category	<input style="width: 90%;" type="text" value="Coldwater"/>

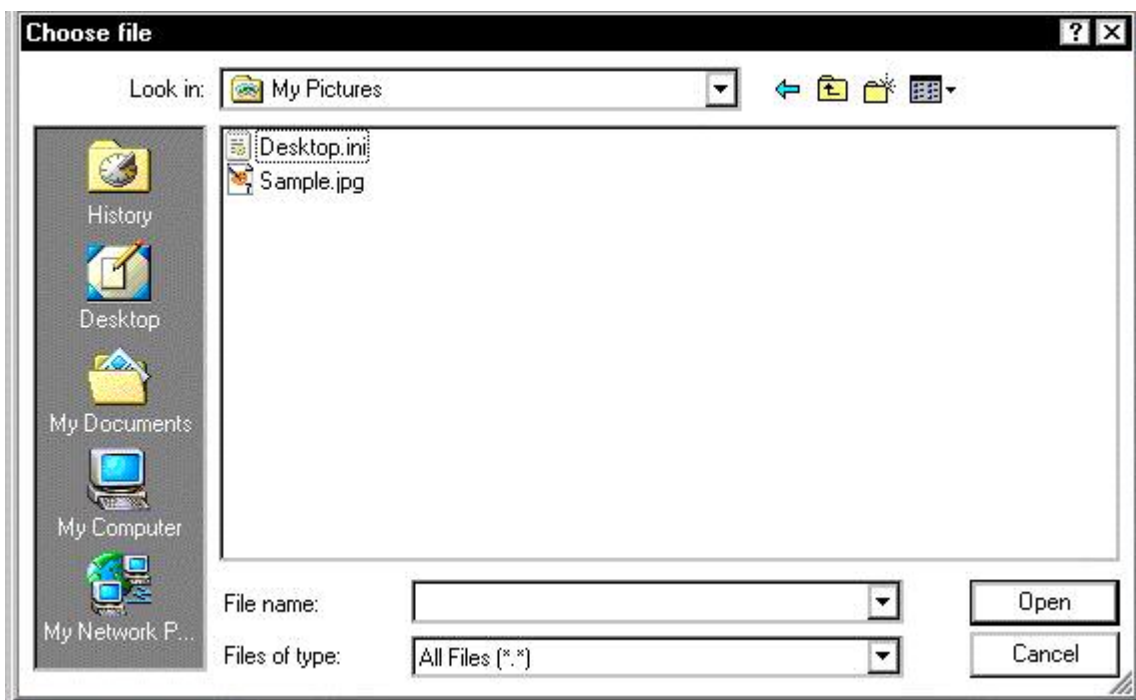
You may need to select your category from the pulldown menu, if it's not shown.



At the bottom of the **Photo Upload** window, click the 'Browse' button to locate your image on your computer.

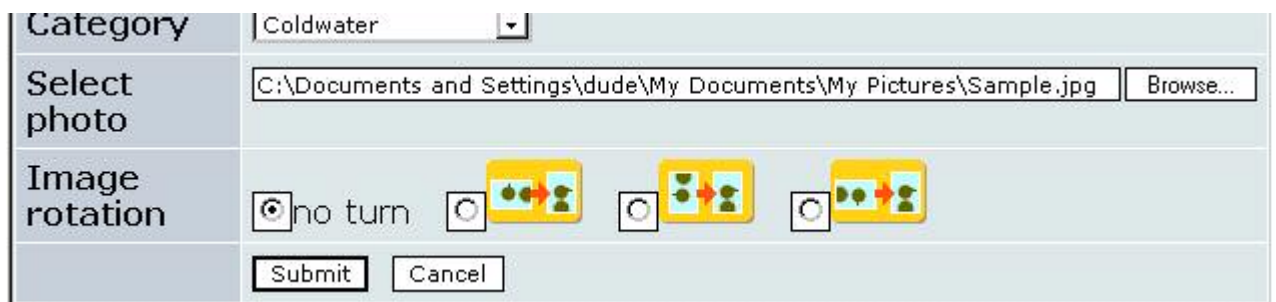


The 'Choose file' requester will open. Find your image and double-click it.



The path to your image will appear at the bottom of the **Image Manager** window as below. If you need to turn the image click the relevant 'Image Rotation' option.

Press the 'Submit' button to upload your image.



You're done!